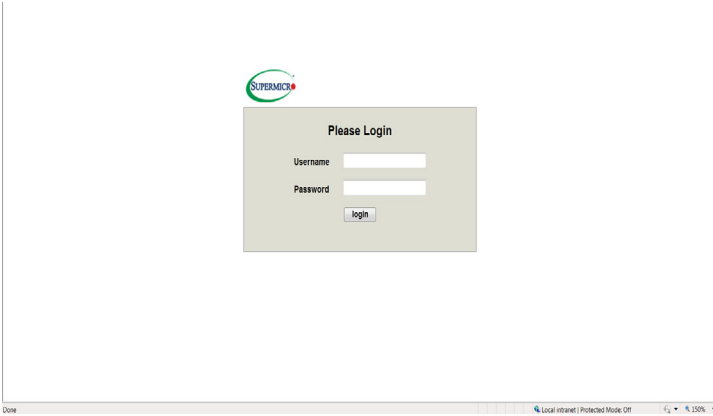



2-4 Accessing the Remote Server via Console Redirection Using the Browser

To Log In to the Remote Console

Once you are connected to the remote server via IPMI Console Redirection, the following IPMI Login screen will display.




1. Enter your username in the *Username* box.

 **Note:** The manufacturer default username and password are ADMIN/ADMIN. Once you have logged into the BMC using the manufacturer default password, be sure to change your password for security purpose.

2. Enter your password in the *Password* box and click on <Login>.

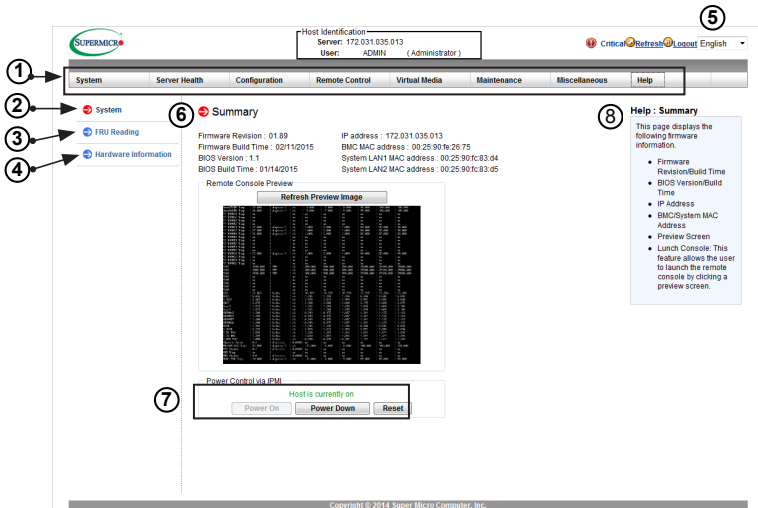
3. The home page will display as shown on the next page.

 **Note 1:** To use the IPMIView utility for Console Redirection, please refer to the IPMIView User's Guide for instructions.

Note 2: The *Administrator* account cannot be deleted.

2.5 IPMI Main Screen

The IPMI Main screen displays the following information.

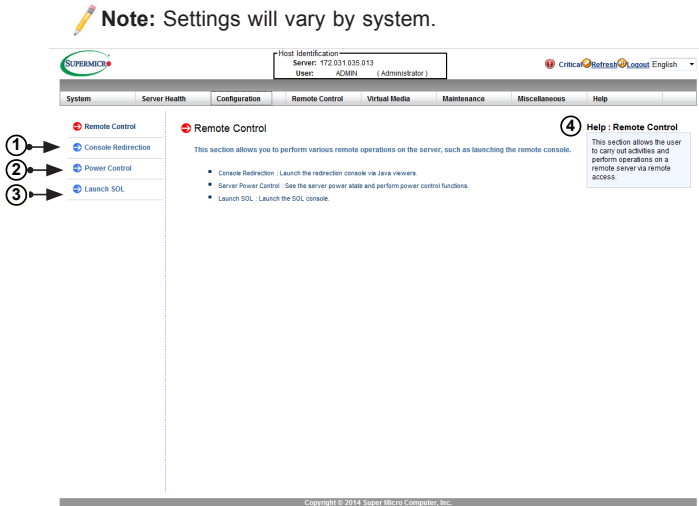


The IPMI Main screen displays system information, including the following:

1. The Menu bar: The menu bar on the top displays System Information, Server Health, Configuration, Remote Control, Virtual Media, Maintenance, Miscellaneous, and Help. Click an item on the menu bar to access an IPMI feature and configure its settings.
2. The System window: This window displays the System submenu items. Click an item in this window to configure the following settings.
3. FRU Reading: This page details the FRU (Field Replaceable Unit) information. Click on "FRU Reading" to display this information.
4. Hardware Information: This page shows the hardware architecture. Click on "Hardware Information" to display the following information:
 - System
 - Manufacturer
 - Product Name
 - Serial No.

2.8 Remote Control

This section allows the user to carry out activities and perform operations on a remote server via remote access. When you click on *Remote Control* in the Options window, the following screen will display:



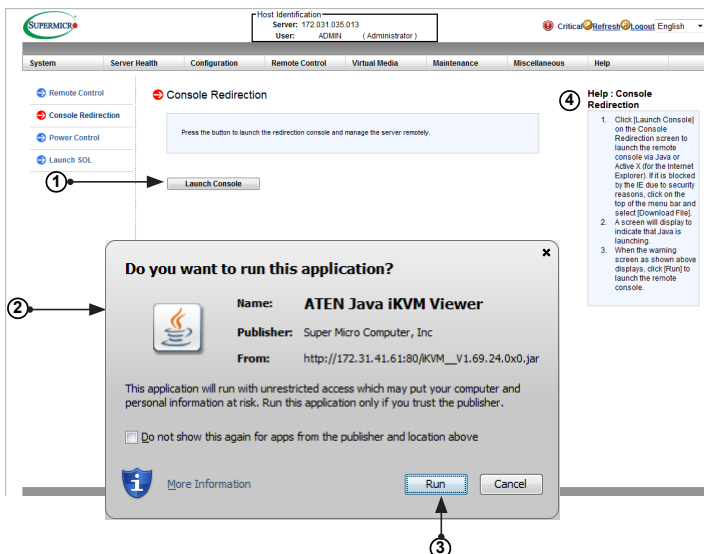
1. Click on *Console Redirection* to launch Console Redirection and configure the settings of the remote server. For more details on Console Redirection, please refer to "Launching Console Redirection" on the next page.
2. Click on *Power Control* to display and configure the power settings of the remote console, including the following settings.
 - Reset Server
 - Power Off Server-Immediate
 - Power Off Server-Orderly Shutdown
 - Power On Server
 - Power Cycle Server

Once you have clicked the desired power setting, click on "Perform Action" to change the power setting of the server.

3. Click on *Launch SOL* to launch SOL (Serial Over LAN) console and manage the remote server.
4. Click on <Help> to display the Help menu for the *Remote Control* page.

2.8.1 Launch Console Redirection

This feature allows you to launch Console Redirection via IKVM (keyboard, video/monitor, mouse) support. When you click on *Console Redirection* in the Options window, the following screen will display:

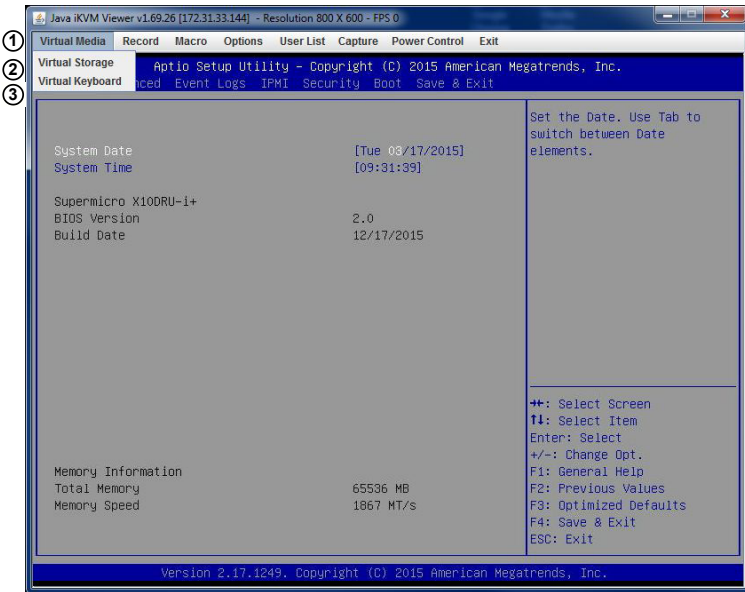


1. Click <Launch Console> on the Console Redirection screen to launch the remote console via Java (for the Internet Explorer). You need to have Java installed in your system to launch the console.
2. A dialog box will display to indicate that Java is launching
3. Click on <Run> to launch the remote console. The main screen like the one below will appear. Note that your screen may not look exactly like the one below.
4. Click on <Help> to display the Help menu for the *Console Redirection* page.



2.8.1a Console Redirection - Virtual Device

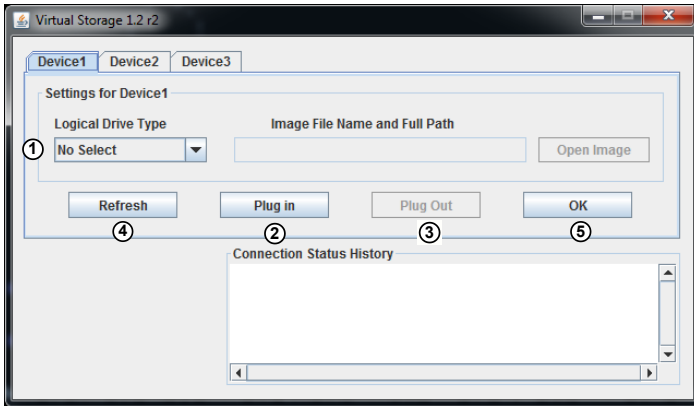
This feature allows you to configure virtual device settings for your console redirection.



1. Click on *Virtual Media* to configure virtual device settings of a server at a remote site via Console Redirection.
2. Click on *Virtual Storage* to select a device you want to connect to the remote server as a virtual device.
3. Click on *Virtual Keyboard* to launch the virtual keyboard.

Virtual Storage

When you click on *Virtual Storage* as described on the previous page, the following screen will appear. You are able to use up to three devices for virtual storage..



1. Select the logical drive type from the dropdown menu. The options are as follows:
 - *Upload IMA*: Select to browse for and upload an IMA file.
 - *ISO File*: Select to browse for and upload an ISO file.
 - *Web ISO*: Select to mount a Web ISO. The file will be mounted from the web interface. To specify the file location, set the image path on the CD-ROM Image page in the IPMI.
 - *C: SATA HD*: Select to mount from the local computer you are using to access the IPMI.
2. Click on <Plug in> to mount the selected drive.
3. Click on <Plug out> to unmount the selected drive.
4. Click on <Refresh> to refresh the connection status.
5. Click on <OK> to save the changes and exit the window.

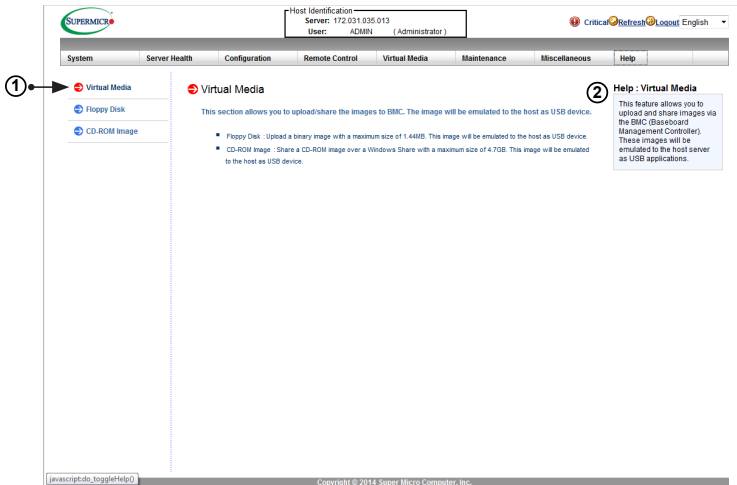
Virtual Keyboard

When you click on *Virtual Keyboard* in the Virtual Media menu, the virtual keyboard will appear.



2.9 Virtual Media

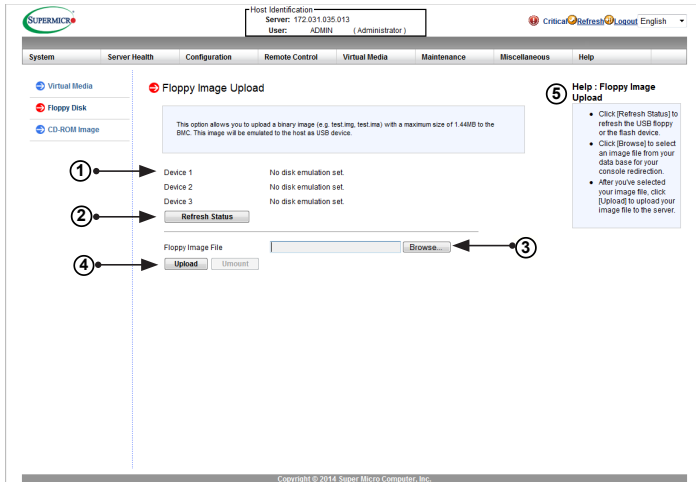
This feature allows you to upload and share images via the BMC (Baseboard Management Controller). These images will be emulated to the host server as USB applications. When you click on *Virtual Media* in the Options window, the following screen will display:



1. This section shows information related to virtual media, such as Floppy Disk and CD-ROM Image.
 - Floppy Disk: Upload a binary image with a maximum size of 1.44MB. This image will be emulated to the host as a USB device.
 - CD-ROM Image: Share a CD-ROM image over Windows Share with a maximum size of 4.7GB. This image will be emulated to the host as a USB device.
2. Click on the <Help> tab to display the Help menu for the *Virtual Media* page.

2.9.1 Floppy Disk

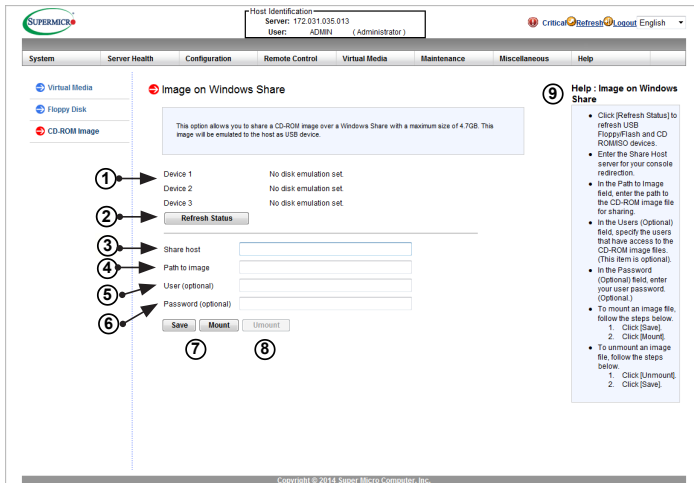
This feature allows you to configure Floppy Disk image files for sharing. When you click on *Floppy Disk* in the Options window, the following screen will display:



1. Displays a list of devices and their status (e.g. Device 1, Device 2, Device 3).
2. Click on <Refresh Status> to refresh the Floppy disk.
3. Click on <Browse> to select an image file from a specified location for your console redirection.
4. After you have selected your image file, click on <Upload> to upload your image file to the server.
5. Click on the <Help> tab to display the Help menu. The menu explains the function of each button on the page.

2.9.2 CD-ROM Image

This feature allows you to configure CD-ROM image files for sharing. When you click on *CD-ROM Image* in the Options window, the following screen will display:



1. Displays a list of devices and their status (e.g. Device 1, Device 2, Device 3).
2. Click on <Refresh Status> to refresh *USB Floppy/Flash* and *CD ROM/ISO* devices.
3. Enter the *Share Host* server for your console redirection.
4. In the *Path to Image* field, enter the path to the CD-ROM image file for sharing.
5. In the *Users (Optional)* field, specify the users that have access to the CD-ROM image files. (This item is optional).
6. In the *Password (Optional)* field, enter your user password. (Optional.)
7. To *mount* an image file, click on <Save> and then <Mount>.
8. To *unmount* an image file, click on <Unmount> and then <Save>.
9. Click on the <Help> tab to display the Help menu. The menu includes instructions on how to share a CD-ROM image.